



Wining® Scald Protection

Operation

Under normal operating conditions, water passes through a virtually unobstructed DN25 or larger tee pipe, allowing this valve to be used in higher flow lines. The DN15 SPV will screw into any DN15 threaded opening with adequate internal clearance. When the water temperature rises above safe limits, and a danger of scalding exists, the thermal actuator located in the fluid stream modulates the valve open. When the water temperature returns to the safe range, the valve then modulates closed, minimizing water loss. Due to the actuator's placement in the fluid stream this valve is unaffected by ambient air temperature and is open at 41°C and will remain open until water temperature is 35°C.



Design Features

- * Stainless body
- * Thermal element
- * Narrow temperature band
- * Compact, low mass - Fast response
- * Ram-type plug for reliable tight shutoff
- * Sensitive to fluid temperature only

Specifications

Product Name	Model	Port Size	Body Material	Close/Open Temp(°C)	Maximum Temp(°C)	Maximum Pressure(MPa)	Flow Rate(Cv)	Dimensions(mm)	Net Weight(g)
Scald Protection Valve	SP68-95	1/2" Female	SS 316	29~35	+120	1.0	0.6	φ32*107	434.9
Scald Protection Valve	SP68-100	1/2" Female	SS 316	32~38	+120	1.0	0.6	φ32*107	434.9
Scald Protection Valve	SP68-105	1/2" Female	SS 316	35~41	+120	1.0	0.6	φ32*107	434.9

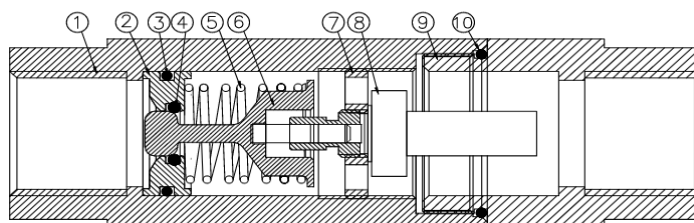
Notes:

- * Seal material: EPDM, Viton available
- * Valve body material: SS304/SS316 available.

Application

Solar radiation or overheating caused by steam or electric tracing can cause extremely high temperatures at the point of use, resulting in a safety hazard for plant personnel. When installed in safety showers, eyewash stations, and other locations exposed to the same source of overheating as the system, the SPV will be heated just as the pipe system. The valve will open to establish flow until the overtemperature water is eliminated and it will then modulate closed.

ITEM	DESCRIPTION	MATERIAL
1	BODY-HALF	SS304/SS316
2	SEAT	BRASS
3	SEAT SEAL	EPDM
4	SEAT SEAL	EPDM
5	OPERATING SPRING	SS304
6	RAM-TYPE PLUG	BRASS
7	ACTUATOR CARRIER	BRASS
8	THERMAL ACTUATOR	BRASS
9	BODY-HALF	SS304/SS316
10	BODY SEAL	EPDM



- * Unaffected by pressure variations
- * Easy installation with pipe wrench
- * Discharges the minimum amount of water required to keep water temperature within safe limits